

REL – 2.5 Te WLL - 3000m - Hydraulic Winch



TECHNICAL SPECIFICATION

Weight without cable (Kg)	Cable diameter (mm)	Capacity (m)	Line speed (m/min)		WLL (Kg)		Brake (Kg) Minimum 1.5 WLL	
			First Layer	Top Layer	First Layer	Top Layer	First Layer	Top Layer
3200	11.43	3000	50	90	2545	1500	3900	2250
Winch Hydraulic Drive Supply Required		200 bar 130 l/min			Cable Lead-off Angle		Min + 0° Max + 45° Vertical plane	
Level Wind Electrical Motor Supply Required		1.5 Kw IP56 IE3 380-440V-3 Ph- 50/60 Hz			Frame details		Crash frame with guards, fork lifting pockets and certified lifting lugs	
Local Proportional Control		Bi-directionally proportional joystick			Winch drum dimensions		Drum core Ø 480 mm, Drum Length 1070 mm, Flange Ø 900 mm	
Level wind		Right Angled - Electrically automatic pulse driven level wind with manual adjustment			Drum details		Lebus shell drum; the wire is stored in 16 lays with 90 turns per lay	
Dimensions (LxWxH) Footprint		1260 x 2842 x 2207 mm 1260 x 2735 mm with twist lock option			Cable		Rochester A 302799	
Slip ring		Designed to accept Focal 180 or similar not within scope of supply			Hydraulic Ports		P G1" BSP, T G1" BSP, D G1/2" BSP	

Principle of Operation:

The winch drum is driven directly from a Bonfiglioli gearbox, hydraulic motor and load valve combination. The brake, being failsafe, always defaults to on should, for any reason, electrical supply is lost or the control joystick is in its centre position. The non-drive side housings a bearing and a slipping.

The 90 degree right angled Level wind electrically driven from the 1.5 kW SEW Electric gearmotor. The level wind is PLC controlled, is automatic with a manual override. The Level wind can be adjusted to accept a variety of cable diameters if required.

HMI displays Line Speed, Line Load, Line Out and Line In with the provision of load monitoring with user selectable limits for line tensioning.

The winch is supplied with the following:

- 1 Set - sacrificial steel feet/mounting plates for mounting at ship
- Marine grade paint system (Details can be supplied on application)
- 1 Set - Master Links and Shackles or a 4 leg lifting sling and shackles
- 12 Month Warranty
- Canvas Cover for transport and storage
- Operation and Maintenance Manual in Electronic Format

Optional extras: - please note these are not in the scope of supply but can be offered at extra cost.

- 1 Off – Slip Ring details to be supplied with order
- 1 Off – Extended Warranty
- 1 Off – Winch running flashing lights and/or Klaxon
- 1 Off – Full Spares Kit
- 1 Off – Spare Programmed SD Card for level wind control.
- 1 Off – Laptop c/w software and leads for on-site fault diagnosis.
- 1 Set – Spare sacrificial feet/mounting plates
- Remote Control wired or wireless



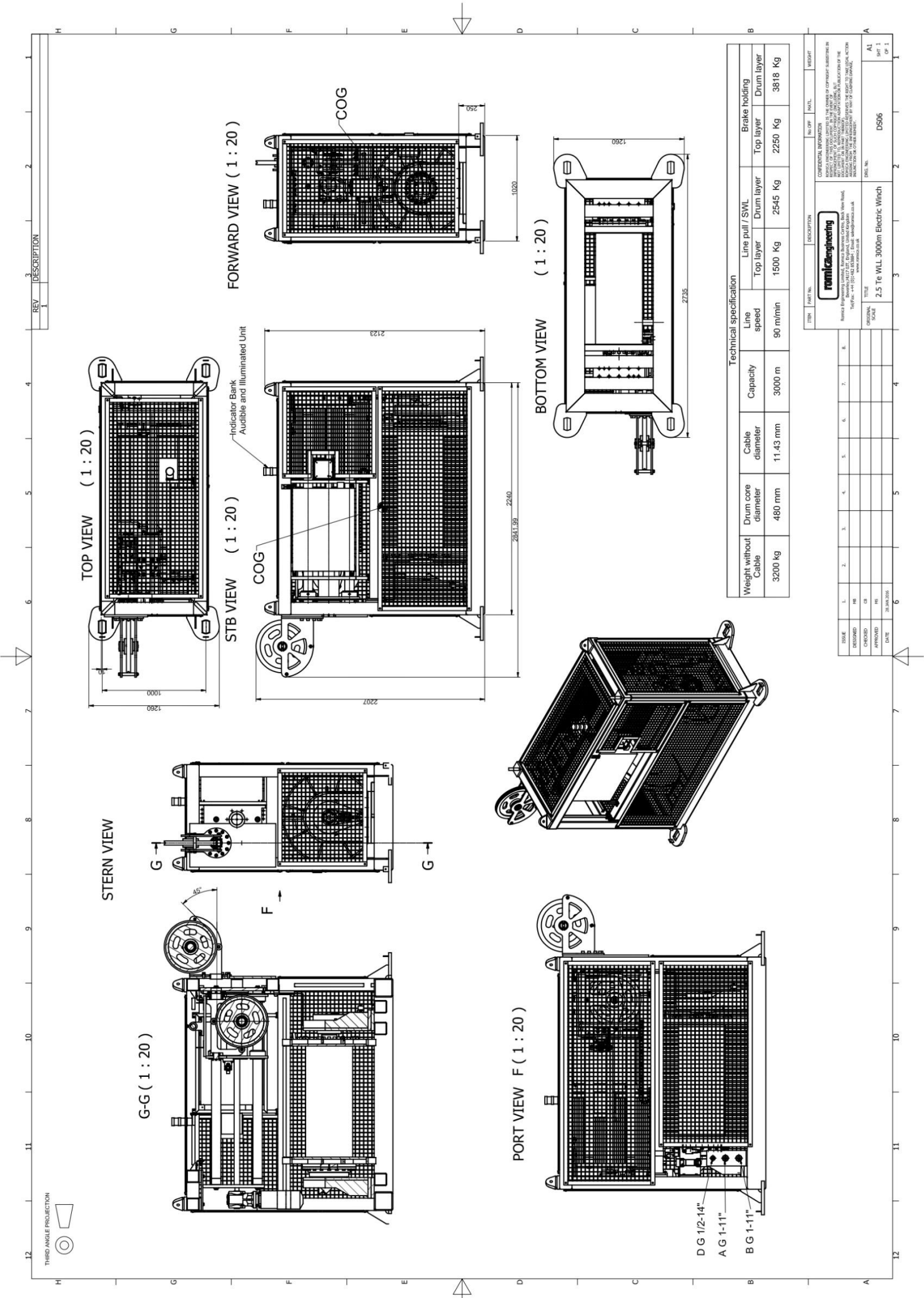
Romica Engineering Ltd (UK)

Romica Business Centre,
Beck View Road, Grovehill Road
Beverley, HU17 0JT, United Kingdom
P: (+44) 148 285 3884
F: (+44) 148 285 3884
www: <http://romica.co.uk/>

© 2019 The data contained in this document is business sensitive proprietary data owned by Romica Engineering Ltd. This document and the data contained herein may not be disclosed to any third party without the express written permission of Romica Engineering Ltd.



REV	DESCRIPTION
1	



Weight without Cable	3200 kg	Drum core diameter	480 mm	Cable diameter	11.43 mm	Capacity	3000 m	Line pull / SWL		
								Line	Top layer	Drum layer
Line speed	90 m/min	Drum layer	1500 Kg	Top layer	2545 Kg	Drum layer	2250 Kg	Brake holding	Drum layer	3818 Kg

ISSUE	1	2	3	4	5	6	7	8	9	10	11	12
DESIGNED	MR											
CHECKED	CR											
APPROVED	MR											
DATE	28.04.2016											

TITLE	2.5 Te WILL 3000m Electric Winch
SCALE	AS SHOWN
DRWG. NO.	D506
REV. 1	CP. 1

COMPANIAL WORKSHEET

nomicaengineering

nomicaengineering LTD, 105-107, South Street, Southend-on-Sea, Essex, SSO 1 2DA, United Kingdom. Tel: +44 (0) 1462 438387. Email: sales@nomica.co.uk

INDICATE THE PART TO WHICH THE ACTION INDICATES CAN BE APPLIED.